



# Paper Tales Creative Download

Craft at your own pace with this easy to follow PDF Tutorial  
*StampandCreatewithMikki.com*

## Lakeside Retreat Paper Pumpkin Alternatives

Projects created thinking outside of the box - literally!



I hope you enjoy this project as much as I did. Remember, crafting doesn't have to be perfect to be meaningful — it just has to be fun. Thanks for being here and crafting along with me ✂️🌟

*Mikki*

**Let's Craft Something Made With Love** ❤️





A Paper Pumpkin Thing Blog Hop

## Supplies

**Stamps:** [Paper Pumpkin Subscription](#) [166815]

**Ink:** [Peaceful Pine Classic Stampin Pad](#) [167679]

**Paper:** [Window Sheets](#) [142314], [Peaceful Pine 8 1/2" X 11" Cardstock](#) [167691], [Pool Party 8-1/2" X 11" Cardstock](#) [122924], [Basic White 8 1/2" X 11" Cardstock](#) [166780], [Misty Moonlight 8-1/2" X 11" Cardstock](#) [153081]

**Tools & Adhesive:** [Multipurpose Liquid Glue](#) [110755], [Paper Trimmer](#) [152392], [Stampin' Dimensionals](#) [104430], [Bone Folder](#) [102300], [Take Your Pick Crafter Tips](#) [161602], [Baker's Twine Essentials Pack](#) [155475], [Tear & Tape Adhesive](#) [154031]

## Measurements for Gift Box:

- Misty Moonlight Cardstock: 8" x 8-1/2" (see template for scoring)
- Envelope - PPK: 1-1/4" x 4" (x2), 2-1/4" x 4" (x2), 1-1/4" x 2-1/4" (x2)
- Blue Panel - PPK: 2" x 3-1/2" (x2)
- Stripe card base: 2-1/8" x 3-3/4" (x2)
- Square accent - PPK: 1-7/8" x 3-1/4" (x2)

## Instructions for Gift Box:

- Use the template on page 4 for cutting and scoring details.
- Add Tear & Tape to the inside of the bottom left flap. Turn over and add to the 1/2" center (right) and the remaining bottom tabs.
- Stamp the birds and cat tails onto the square piece from the kit with Peaceful Pine ink.
- Cut out all your decorative pieces and attach them together with the coordinating sizes.
- Attach the panels to the box before you glue the box together.
- Fold the box base at all the score lines and use the Tear & Tape strips to seal it together. The top is free to close by tucking inside.
- Decorate the front and back with the stone embellishments.



Gift Tag I added: Basic White at 1/2" x 2-5/8", stamped with the textured stamp in Peaceful Pines. The mat is the Misty Moonlight sign cut to 3/4" x 1-3/4"



# Lakeside Retreat Alternatives

APPT May Blog Hop

Mikki Winebrenner

mikki@stampandcreatewithmikki.com

www.stampandcreatewithmikki.com

## Measurements for Double Flap Card

- Peaceful Pine: 4-1/4" x 11" score @ 5-1/2"
- Pool Party: 4-1/8" x 5-3/8"
- Basic White: 4" x 5-1/4", scrap piece for stamping
- Window Sheet: 4-1/4" x 5-1/2"
- Plaid Card Base: 2-1/2" x 4-1/4" score @ 1/4", 1-1/8 x 4-1/4" (x2)
- Wood grain Card Base: 1-1/2" x 4-1/4" score @ 3/4"
- Lakefront Card Base: 4" x 5-1/4"

## Instructions for Double Flap Card:

- Cut and score all your paper to size.
- From the kit you will need: Pecan Pie sign, ore's, life jacket, fish plaque, circle decorative piece and the golden glow banner.
- Stamp 2 cat tails onto scrap pieces of Basic White with Peaceful Pines. Stamp your sentiment "Older, Wiser, Better" onto the banner.
- Stamp your inside sentiment and the rope in each corner of the large Basic White panel also in Peaceful Pines.
- Attach the circle piece to the lower left corner of the Basic White, trim off any overhang. Attach that to the inside of the Peaceful Pines Card Base.
- Attach the doc panel to the Pool Party panel.
- Attach the scored plaid to the top of the Window Sheet - only attach one side.
- Turn the window sheet over and attach the folded wood grain panel to the bottom of the window sheet - only attach the one side.
- Attach one of the 1-1/8" panels over the white from the plaid.
- Attach the life jacket, ores and fish plaque to the Pecan Pie sign with liquid glue and dimensionals.
- Wrap a piece of Crumb Cake Bakers twine around the plaid of the window sheet. Tie it off at the front in just a simple knot. Attach the banner to the very bottom center with dimensionals.
- Attach the sign to the plaid by using glue on the tabs and a small couple of dots in each corner - the glue will dry clear and will not be seen easily on the backside.
- Fussy cut out the two cat tails and attach to the bottom of the window sheet. Fold the wood grain panel over the very bottom of them and attach it down. Attach the stones along the edge of the paper to give it a trail look.
- Attach the top flap of the plaid to the Peaceful Pines Card Base, line it up to the score line is at the very top of the the card base.
- Attach the remaining plaid piece over the white that is showing.
- Attach the Pool Party panel to the card front. You can stamp birds and cat tails if you want.
- Enjoy!



PaperTales Craft Download

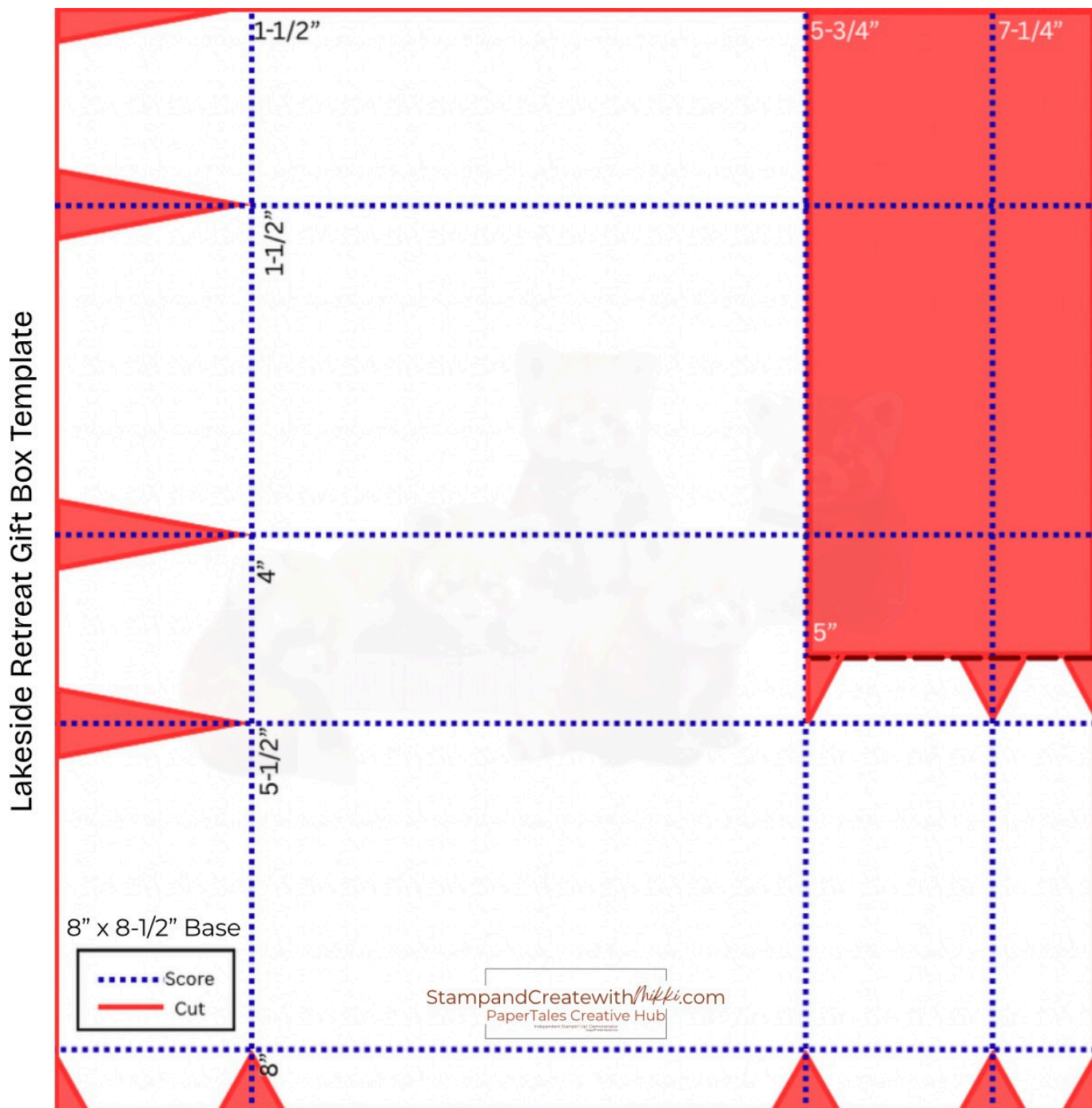
© 2026 Mikki | Personal Use Only

Images © Stampin' Up! 1990-current

Stampin' Up!® products used under Demonstrator Policy.

I am an independent Stampin' Up!® Demonstrator.

# A Paper Pumpkin Thing – Lakeside Retreat Gift Box Template





# Flip Top Gift Box

## Paper Pumpkin Alternative

April 2026  
Lakeside Retreat



*Mikki Winebrenner*

Independent Stampin' Up! © Demonstrator

StampandCreatewithMikki.com  
mikkiwinebrenner.stampinup.net

Follow Me:

@PaperTaleswithMikki

@papertalesstampingwithmikki

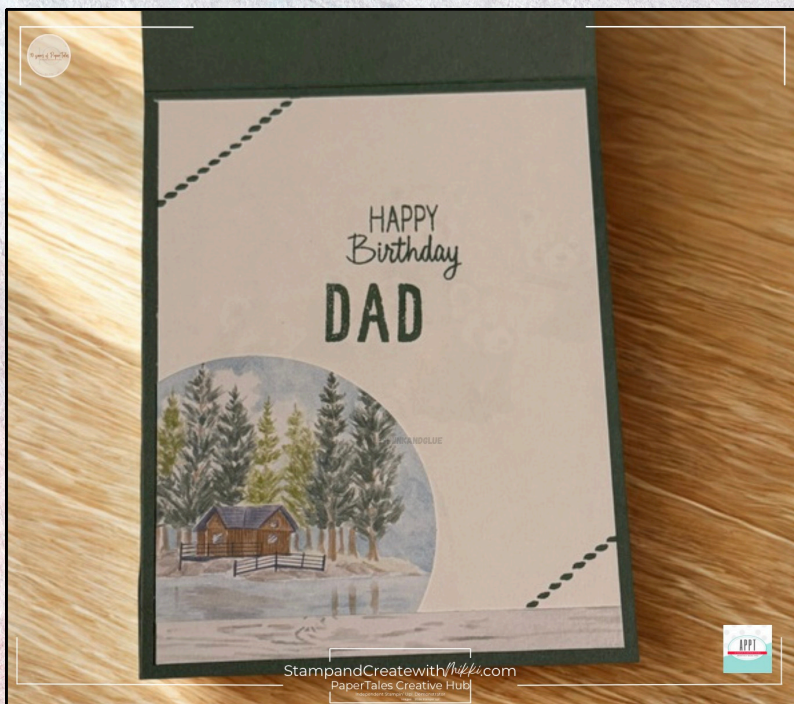


*Creating Smiles*  
one card at a time

# Double Flap Window Card Paper Pumpkin Alternative



April 2026  
Lakeside Retreat



*Mikki Winebrenner*

Independent Stampin' Up! © Demonstrator

StampandCreatewithMikki.com  
mikkiwinebrenner.stampinup.net

Follow Me:

@PaperTaleswithMikki

@papertalesstampingwithmikki



*Creating Smiles*  
one card at a time

